

# UseR in the financial sector

International Workshop on  
Computational and Financial Econometrics  
Geneva, 20 - 22 April 2007

Dr. Bernhard Pfaff  
Invesco Asset Management Deutschland GmbH  
Frankfurt am Main

# Table of Contents

Section **01** – Overview

---

Section **02** – The case of R

---

Section **03** – Multiple equation model

---

Section **04** – Summary

---

CONFIDENTIALITY NOTICE: All material presented is compiled from sources believed to be reliable and current, but accuracy cannot be guaranteed. This is not to be construed as an offer to buy or sell any financial instruments. It is not our intention to state, indicate or imply in any manner that current or past results are indicative of future profitability or expectations. As with all investments there are associated inherent risks. Please obtain and review all financial material carefully before investing. This publication may contain confidential and proprietary information of INVESCO Institutional and/or AMVESCAP International Companies. Circulation, disclosure, or dissemination of all or any part of this material to any unauthorized persons is prohibited. Unauthorized reproduction or distribution of all or any part of this material is prohibited.



# Overview

# 01

---

# Overview

- Using R in the financial sector
  - The pros and cons.
  - Examples.
- A structural multiple equation model
  - Purpose.
  - Model setup.
  - Implementation and results.
- Summary

# The case of R

02

---

# Life before R at Invesco

*Let's not kid ourselves: the most widely used piece of software for statistics is Excel.<sup>a</sup>*

- Use of MS Excel (VBA) was ubiquitous.
- Hence, statistical analysis was confined to MS Excel.
- RATS was used as sole econometric software package.
- Stock Selection: Indicator analysis have been directly computed on the SQL-databases.
- Reports have been processed manually.

---

<sup>a</sup>Brian D. Ripley ('Statistical Methods Need Software: A View of Statistical Computing') Opening lecture RSS 2002, Plymouth (September 2002), cited from package fortune by Achim Zeileis.

# The pros & cons

## PROS FIRST ...

7

- Transparency: one can look under the hood.
- Powerful: Rich language, highly customisable, speed.<sup>a</sup>
- Interfaces: C/C++, FORTRAN/Fortran, Java, tcl/TK, *etc.*
- Connectivity: ODBC, (D)COM, ftp, socket, *etc.*
- Reporting: Sweave, R2HTML, graphics (bmp, jpg, Metafile, pdf, png, ps).
- Support: Documentation, books, Wiki, dedicated email lists, conferences, courses.
- R is free, no license/upgrade issues.

---

<sup>a</sup>Quoting Tom Maycock from the RATS list (21 February 2007): “[RATS-L] RATS 6.3 Tip: SMPL option on PRINT: ... print(smpl=percent>100.0) / percent ...”.  
In R the same is: percent[percent > 100.0].

# The pros & cons

## ...AND SOME CONS

8

- Learning: R can be a real challenge for the novice.
- Econometric packages: Still some uncharted waters.
- Complexity: R, its CRAN-packages and projects are evolving at a breath-taking pace.



# Life with R at Invesco

## EXAMPLES

9

- Centrally distributed as a software package with Rtools, Emacs/ESS, MikTeX, AucTeX, MinGW.
- Accessing proprietary database written in Delphi *via* (D)COM interface.
- Econometric modelling of financial markets (TAA).
- Enhancing/speeding up indicator calculations for stock selection.
- Automated reporting (pdf- and html-output).

# Multiple equation model

10

03

---

# Purpose

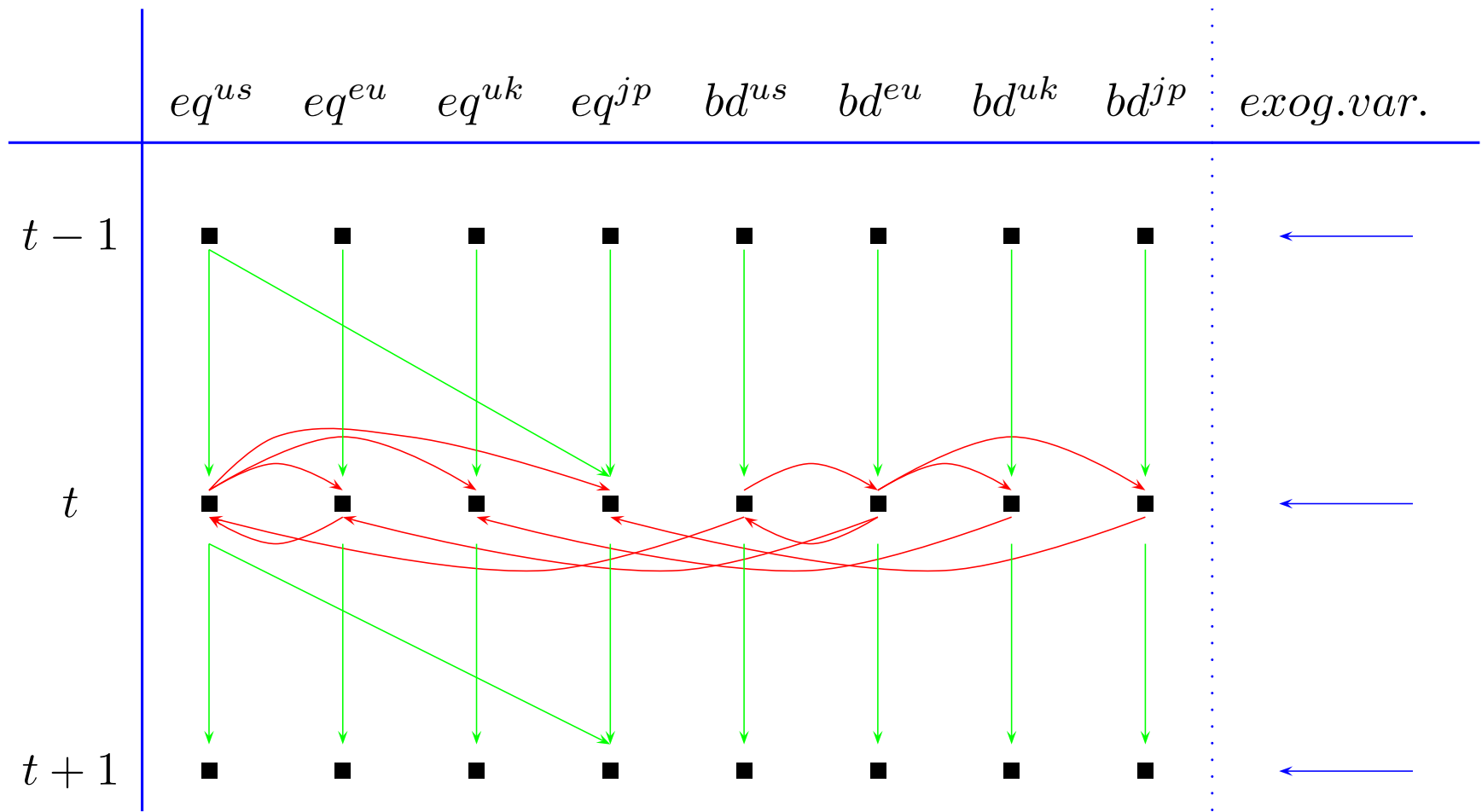
11

- Today's capital markets are highly interdependent.
- This interdependence takes place across countries and/or across assets.
- Model's purpose: exploit these interdependencies for one-step-ahead forecasts.
- Take explicitly macroeconomic variables into account, such that it can be employed for scenario analysis too.

# Structure

- Dependencies and interdependencies between the equities & bond markets across countries are taken explicitly into account.
- A linkage between each of the countries bond market to the equity market is implemented *via* the term spread.
- Aside of financial instruments, key macroeconomic variables are included in the model too.
- End-of-month data for S&P 500, EuroSTOXX, FTSE all share, Nikkei 225 and 10-year benchmark yields (10-year + for U.K) are used as endogenous variables.

# Tinbergen's arrow diagram



# Estimation, solving and forecasting

## ESTIMATION, SOLVING AND FORECASTING

14

- The reaction functions are estimated by OLS (end-of-month data, sample: 01.1992 – 12.2006).
- The estimated reaction functions and the identities are grouped together to form the model.
- The model is solved for the endogenous variables by applying the Gauß-Seidel algorithm.
- One-step ahead forecasts can be generated without further information.

# Technicalities

- R is used as an interface to the Fair-Parke program.<sup>a</sup>
- Within the R script, the necessary data to run the model is imported and transformations are calculated where applicable.
- The set of time series is then exported to a suitable formatted ASCII-file to be read into the FP-program.
- The output of the FP-program is written to ASCII-files, which are then imported to R for further processing and analysis.
- The FP input file creation is simplified and structured through a GUI written in tcl/Tk.

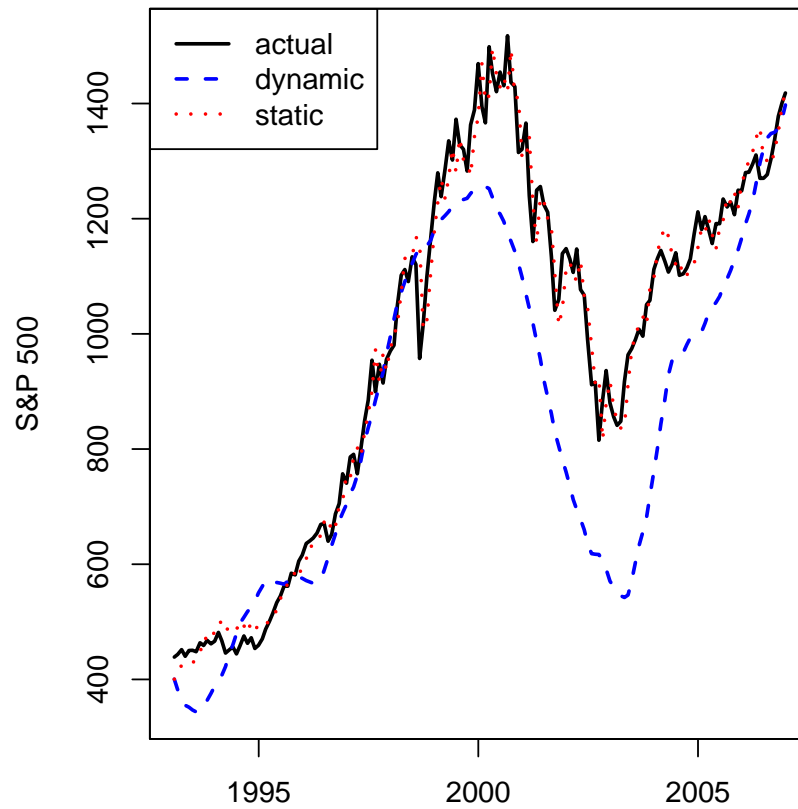
---

<sup>a</sup>The Fair-Parke program itself is written in FORTRAN and is available at: <http://fairmodel.econ.yale.edu/fp/fp.htm>.

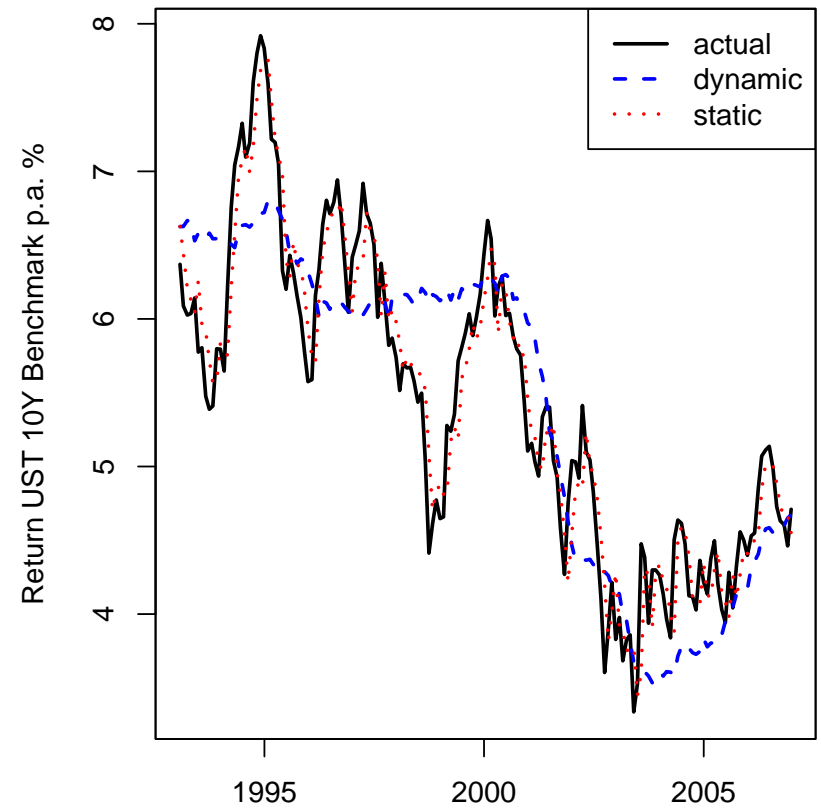
# Dynamic and static ex post forecasts

## U.S. EQUITY AND BOND

### U.S. equity



### U.S. Treasuries



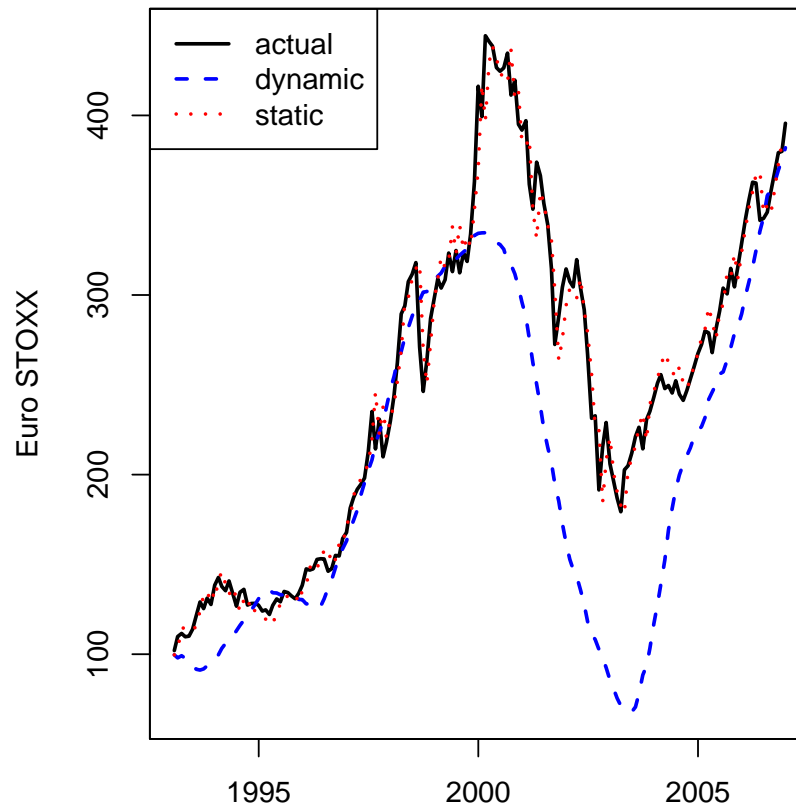


# Dynamic and static ex post forecasts

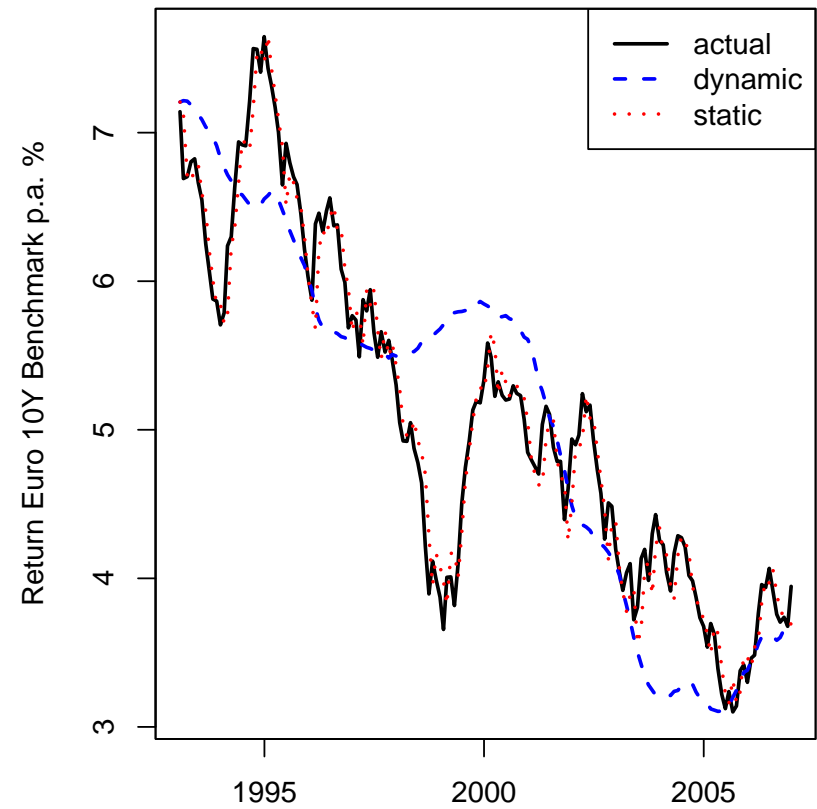
## EUROZONE EQUITY AND BOND

17

### Eurozone equity



### Eurozone Bonds

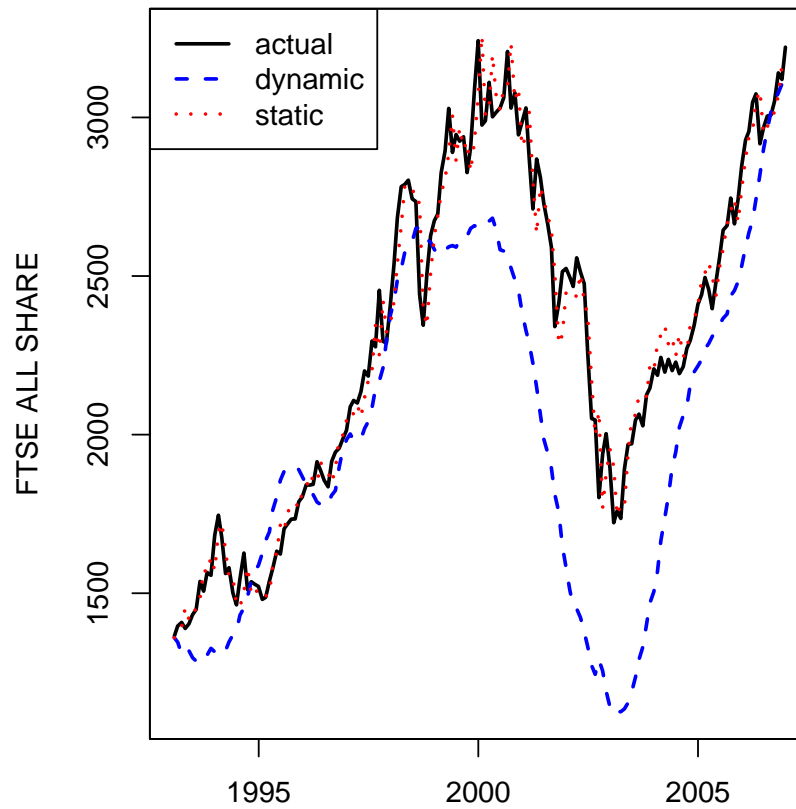


# Dynamic and static ex post forecasts

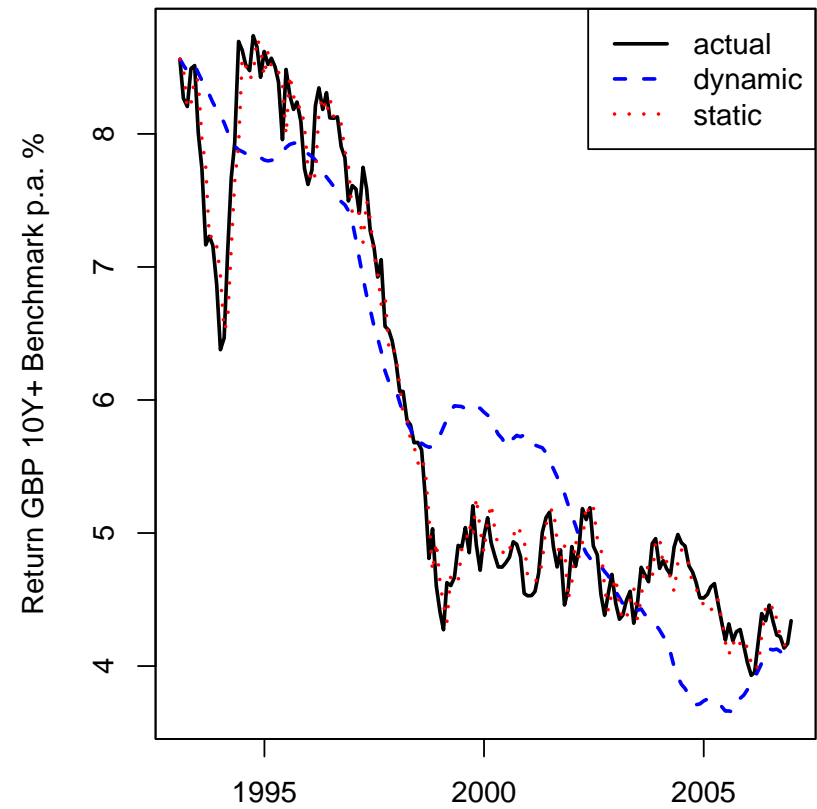
## U.K. EQUITY AND BOND

18

### U.K. equity



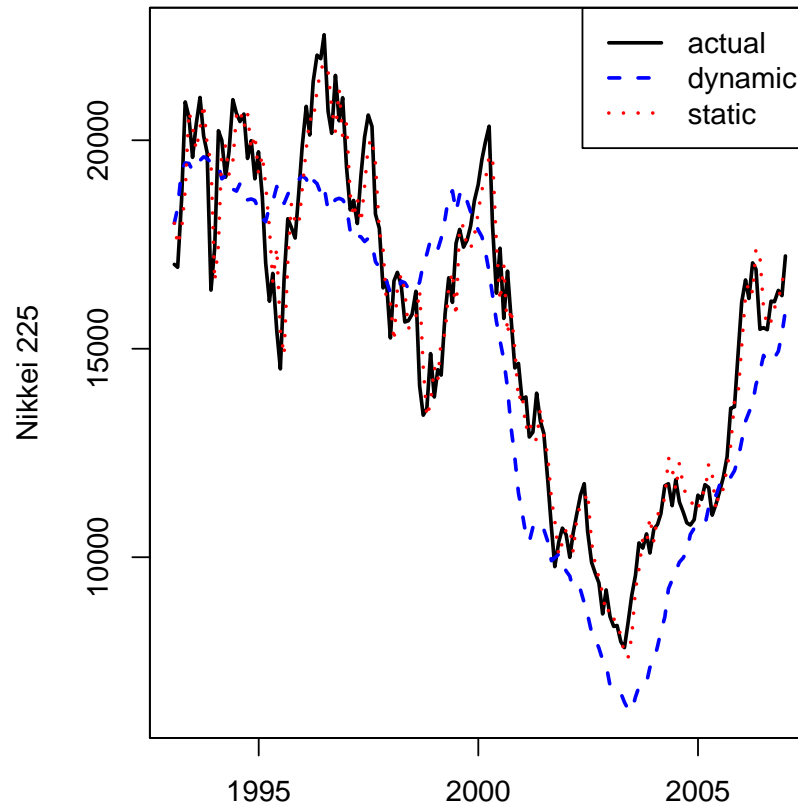
### U.K. Gilts



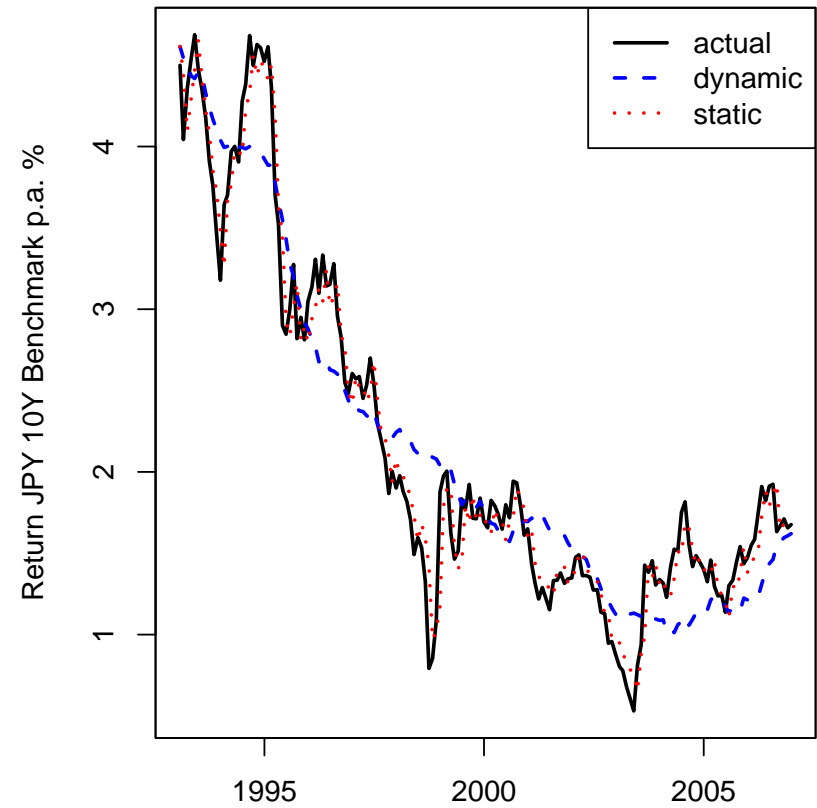
# Dynamic and static ex post forecasts

## JAPAN EQUITY AND BOND

### Japan equity



### Japan JGBs



# Backtest

## GENERAL SETTINGS

20

- Backtest period runs from 01.2001 until 12.2006.
- The model is estimated and solved recursively, thereby the one-month ahead forecasts are generated (end-of-period).
- Qualitative and quantitative forecast measures are calculated, *i.e.* hit rates, Theil's U and its decomposition.
- Finally, trade performance based on futures are computed for holding initial cash positions of 10,000 USD, EUR, GBP and JPY, respectively.
- The benchmark for all is the one-month money market rate.

# Backtest

## FORECAST ERROR MEASURES

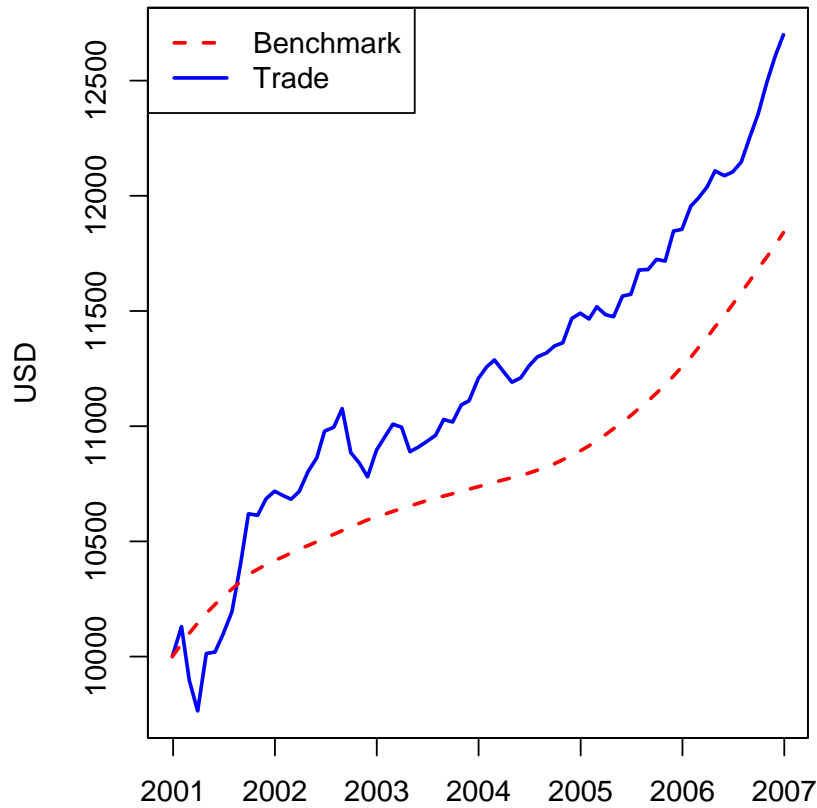
21

	hit rate (pct.)	Theil's U	Bias	Variance	Random
Eurozone equity	73	0.645	0.086	0.124	0.790
U.S. equity	70	0.669	0.126	0.058	0.816
U.K. equity	63	0.664	0.232	0.051	0.717
Japan equity	59	0.640	0.167	0.057	0.776
Eurozone bond	69	0.498	0.137	0.023	0.840
U.S. bond	73	0.497	0.055	0.164	0.781
U.K. bond	62	0.614	0.126	0.147	0.726
Japan bond	76	0.329	0.032	0.000	0.968

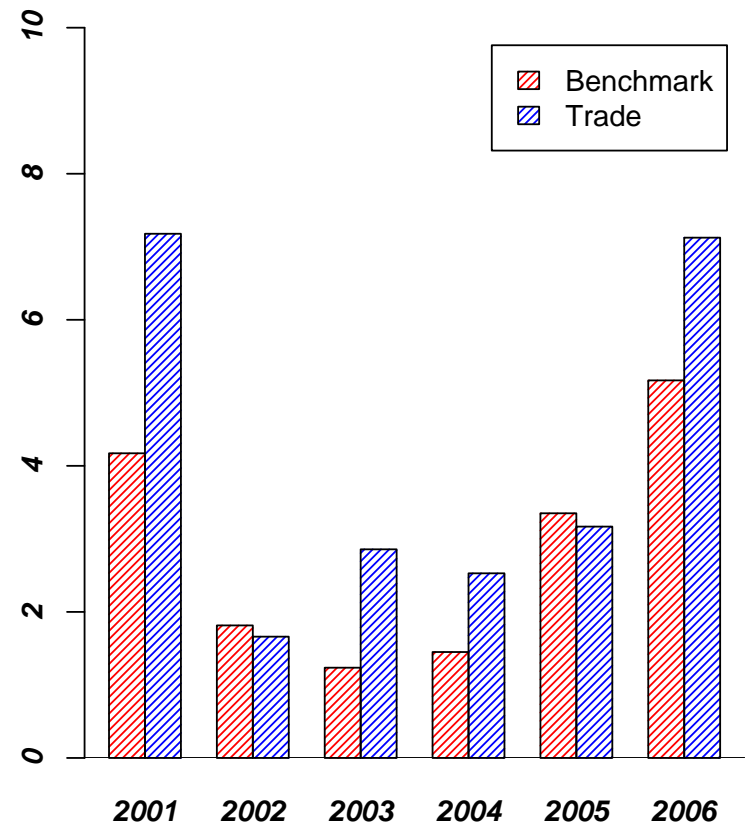
# Backtest

## U.S.: BENCHMARK VS. SIMULATED PORTFOLIO (FUTURES)

### Evolution of USD position



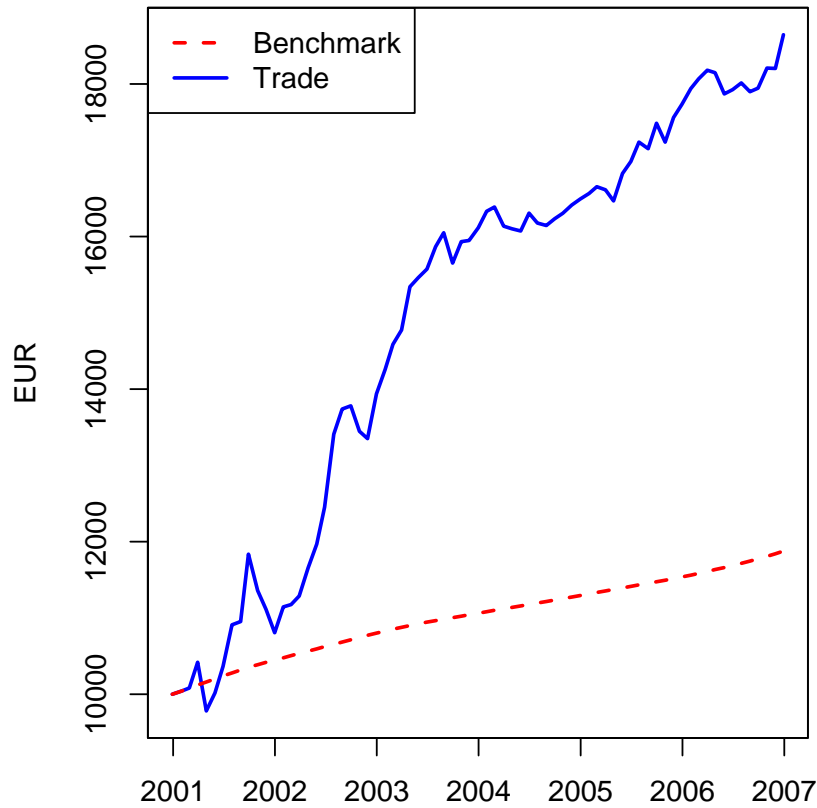
### Annual returns: benchmark vs. simulated



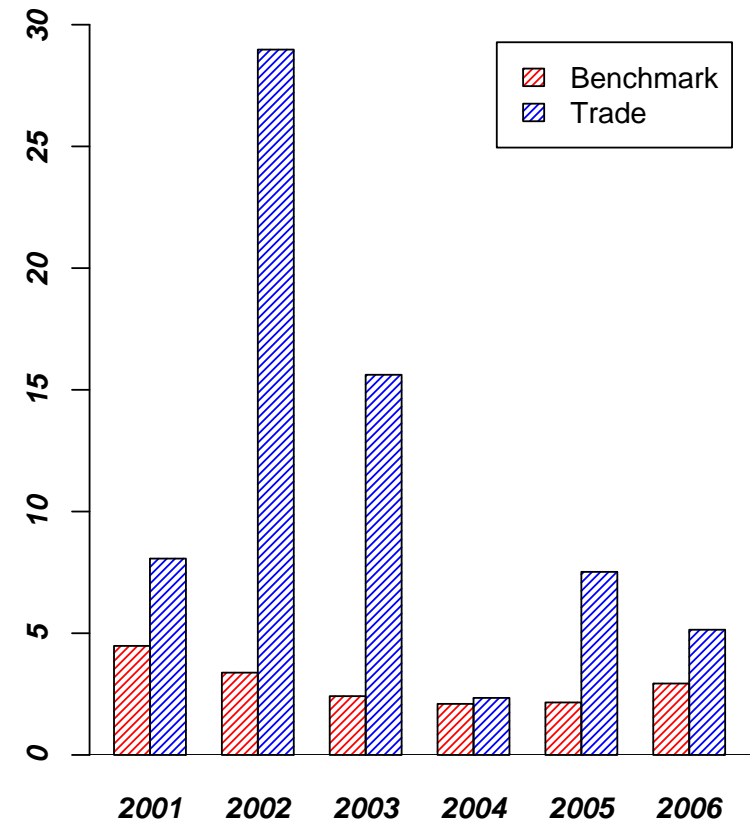
# Backtest

## EUROZONE: BENCHMARK VS. SIMULATED PORTFOLIO (FUTURES)

### Evolution of EUR position



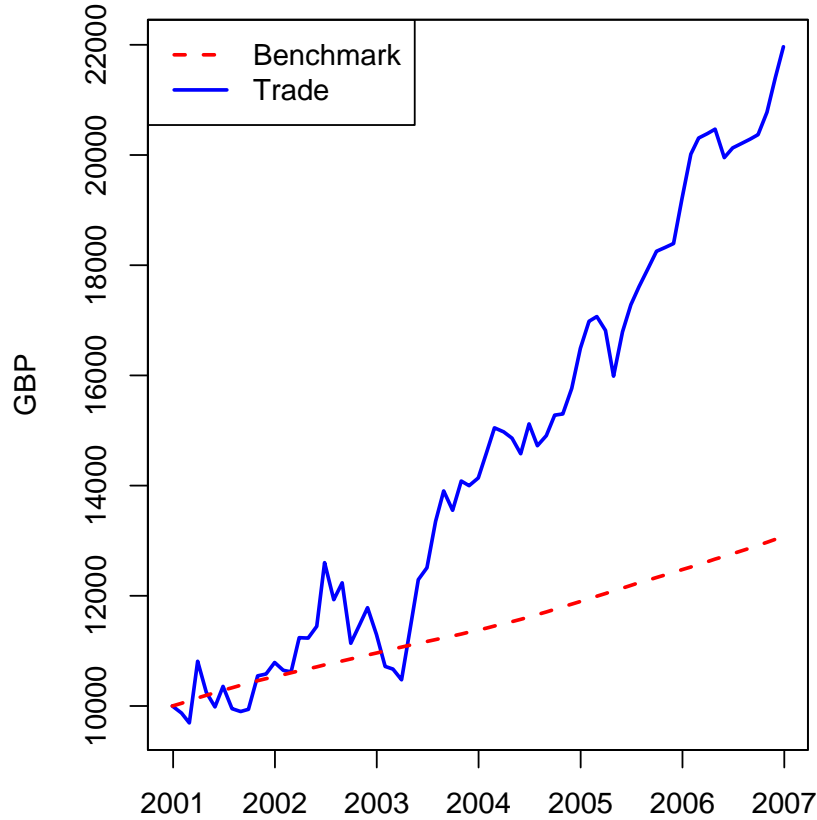
### Annual returns: benchmark vs. simulated



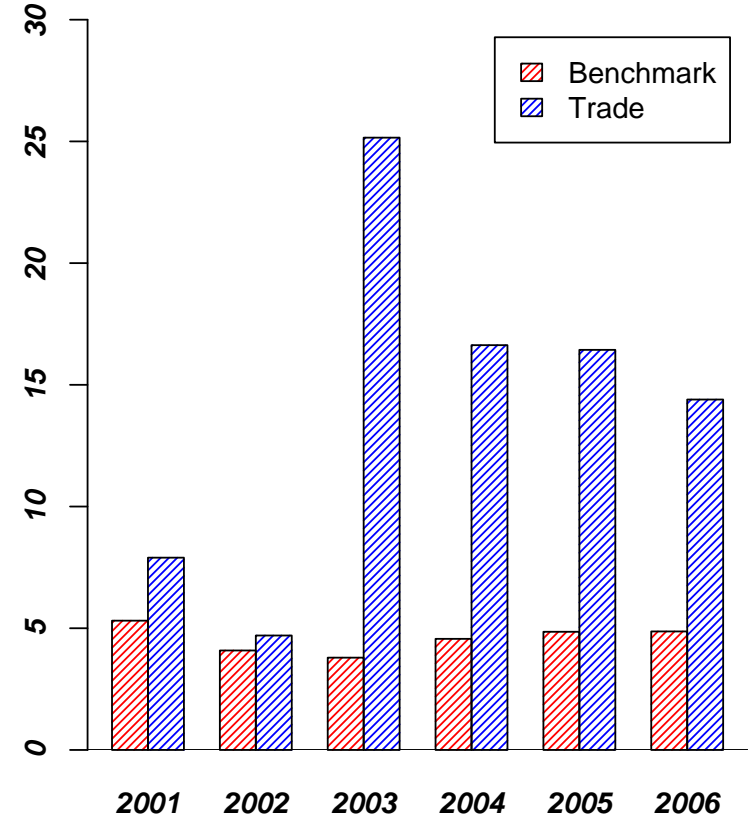
# Backtest

## U.K.: BENCHMARK VS. SIMULATED PORTFOLIO (FUTURES)

### Evolution of GBP position



### Annual returns: benchmark vs. simulated



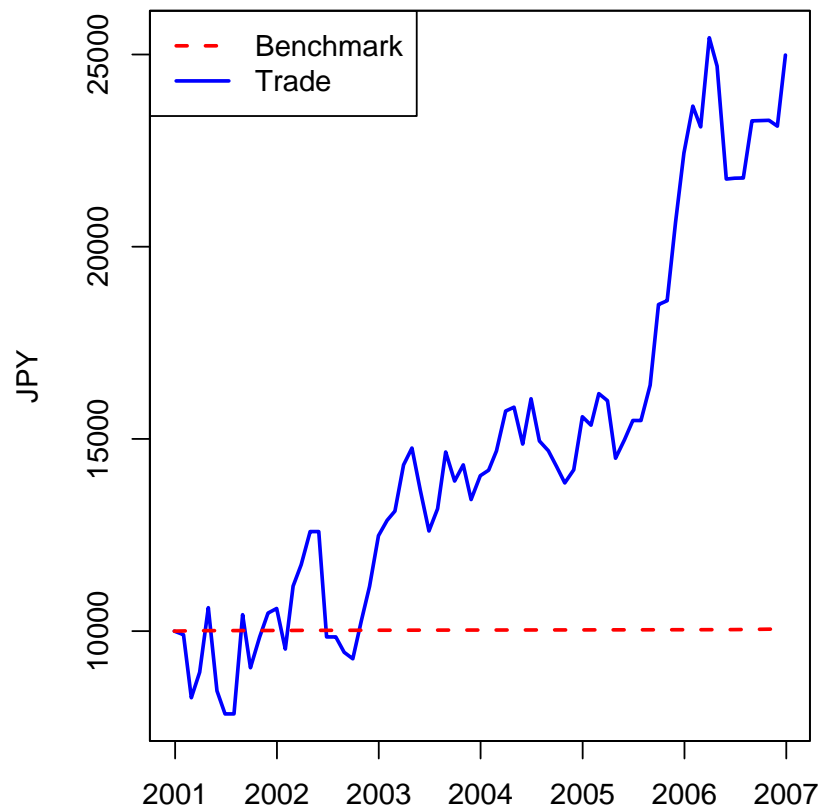


# Backtest

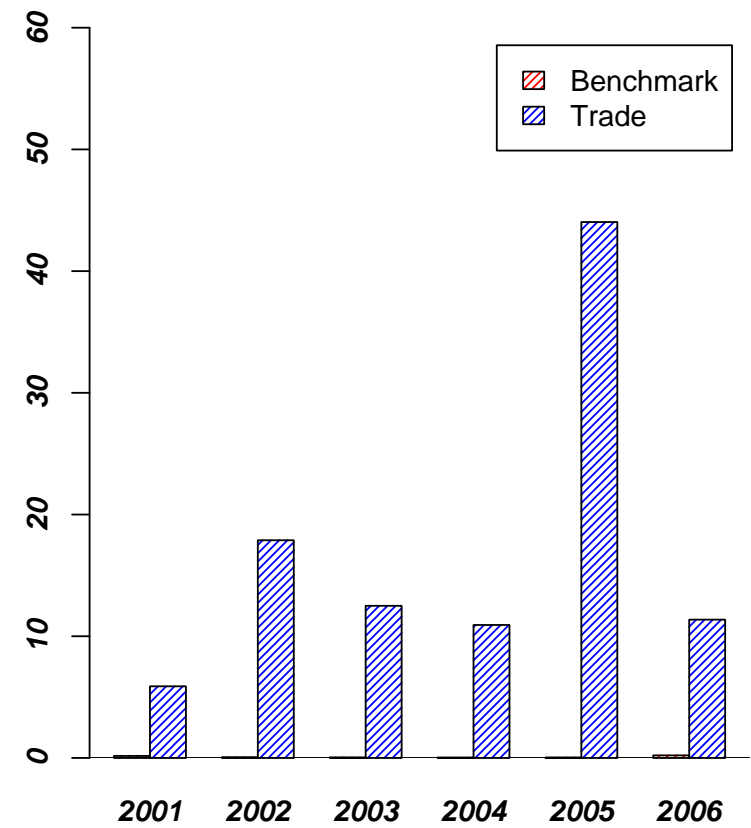
## JAPAN: BENCHMARK VS. SIMULATED PORTFOLIO (FUTURES)

25

### Evolution of JPY position



### Annual returns: benchmark vs. simulated



# Summary

04

---

# Summary

- The pros outweigh the cons; the experience from using R by practitioners on a day-to-day is throughout positive.
- It has been demonstrated how easily R can be employed and integrated with other software, *i.e.* the Fair-Parke program.
- Results from a simple structural multiple equation model look promising in terms of forecast performance.

# Literature

- ★ Barrett, R., M. Berry, T. F. Chan, J. Demmel, J. Donato, J. Dongarra, V. Eijkhout, R. Pozo, C. Romine and H. Van der Vorst, *Templates for the Solution of Linear Systems: Building Blocks for Iterative Methods*, 2nd edition, 1994, Philadelphia, PA: SIAM.
- ★ Fair, R., *Specification, Estimation, and Analysis of Macroeconomic Models*, 1984, Cambridge, MA: Harvard University Press.
- ★ Fair, R., *Testing Macroeconometric Models*, 1998, Cambridge, MA: Harvard University Press.
- ★ Fair, R., *Estimating How the Macroeconomy Works*, 2004, Cambridge, MA: Harvard University Press.
- ★ Greene, W. *Econometric Analysis*, 5th edition, 2002, Upper Saddle River, NJ: Prentice Hall.
- ★ Judge, G., R. Hill, W. Griffiths, H. Lütkepohl and T. Lee, *Introduction to the Theory and Practice of Econometrics*, 2nd edition, 1988, New York, NY, John Wiley & Sons Inc.
- ★ Judge, G., R. Hill, W. Griffiths, H. Lütkepohl and T. Lee, *The Theory and Practice of Econometrics*, 1985, New York, NY: John Wiley & Sons Inc.

# Disclaimer

## CONFIDENTIALITY NOTICE:

All material presented is compiled from sources believed to be reliable and current, but accuracy cannot be guaranteed. This is not to be construed as an offer to buy or sell any financial instruments. It is not our intention to state, indicate or imply in any manner that current or past results are indicative of future profitability or expectations. As with all investments there are associated inherent risks. Please obtain and review all financial material carefully before investing. This publication may contain confidential and proprietary information of INVESCO Asset Management Limited. Circulation, disclosure, or dissemination of all or any part of this material to any unauthorized persons is prohibited. Unauthorized reproduction or distribution of all or any part of this material is prohibited. INVESCO has expressed its own views and opinions in this document and this may change. There is potential for increased volatility in emerging stock markets, and only a modest proportion of investable wealth should be invested in them. Asset management services are provided by INVESCO in accordance with appropriate local legislation and regulations. For information on fund registrations, please refer to the appropriate internet site or your local INVESCO office.

This publication may contain confidential and proprietary information of INVESCO Institutional and/or AMVESCAP International Companies. It has been furnished to a selected number of professional investors solely for information. Circulation, disclosure, or dissemination of all or any part of this material to any unauthorized persons is prohibited. Unauthorized reproduction or distribution of all or any part of this material is prohibited.